

OPINION

Open Access



# From forensic epigenetics to forensic epigenomics: broadening DNA investigative intelligence

Athina Vidaki\*  and Manfred Kayser

## Abstract

Human genetic variation is a major resource in forensics, but does not allow all forensically relevant questions to be answered. Some questions may instead be addressable via epigenomics, as the epigenome acts as an interphase between the fixed genome and the dynamic environment. We envision future forensic applications of DNA methylation analysis that will broaden DNA-based forensic intelligence. Together with genetic prediction of appearance and biogeographic ancestry, epigenomic lifestyle prediction is expected to increase the ability of police to find unknown perpetrators of crime who are not identifiable using current forensic DNA profiling.

## Introduction

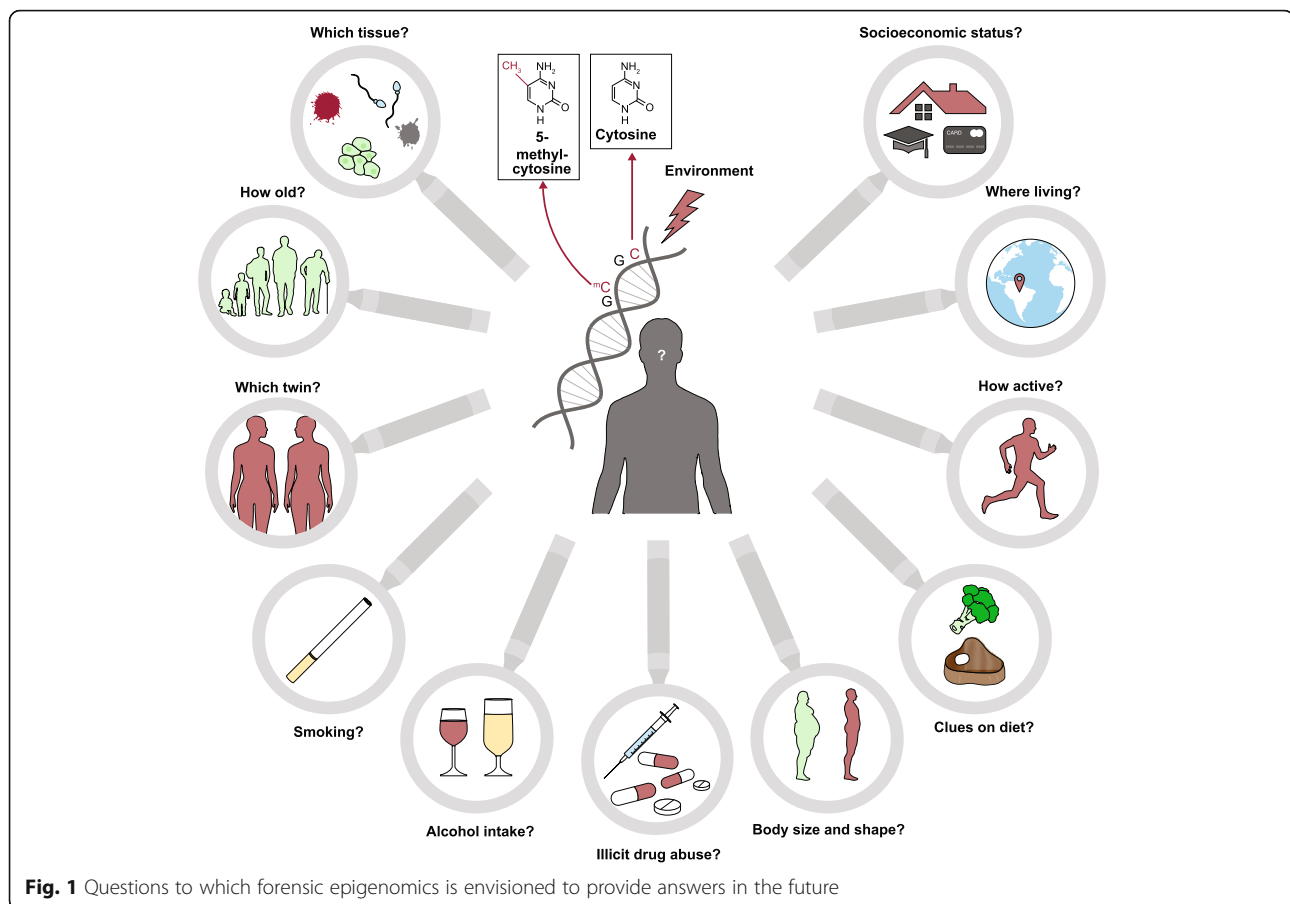
Human genetic variation provides high discriminatory power in identifying known persons, such as perpetrators of crime [1, 2]. Although less established, it can also aid in predicting appearance traits and biogeographic ancestry, which is useful for finding unknown persons who are not identifiable with standard DNA profiling [3, 4]. While the genome is typically non-informative regarding lifelong environmental influences on the body, which can provide forensically relevant information, the epigenome acts as an interphase between the mostly “fixed” genome and the principally “dynamic” environment [5]. For example, lifelong molecular responses to environmental exposure via varying DNA methylation levels at thousands of cytosines across the genome result in individual epigenome variation [6–10].

In contrast to genetics, epigenetics has been explored slowly in the forensic field [11, 12]. DNA methylation is preferred in forensics over other epigenetic modifications (such as changes in chromatin structure or histone modifications) for both in vitro stability and high sensitivity in terms of DNA amounts required. Currently, only a limited number of DNA methylation markers are applied for a few forensic purposes, using technologies that enable the analysis of a small number of such markers. These approaches can be classified as forensic epigenetics, and include DNA methylation profiling for tissue determination [13], age prediction [14], and differentiation between monozygotic twins [15]. The concept of personalized epigenomics, which is already used in medical research [16], has not yet been recognized in the forensic field.

Provided that scientific and technological progress in human epigenomics continues to advance rapidly, we envision the establishment of an “epigenomic fingerprint” [17] from crime scene traces as a promising approach to address various forensically relevant questions that cannot be answered through genetics. We also expect that in the near future novel technologies will be developed to allow the detection of large-scale DNA methylation variation in forensic-type DNA for many more forensic purposes—that is, forensic epigenomics will emerge. These purposes are likely to include the prediction of forensically informative lifestyle and environmental information of an unknown trace donor (Fig. 1) to help further overcome the principle limitation of the current use of DNA in human forensics. Current forensic DNA profiling is completely comparative; that is, it aims to match DNA profiles from crime scene traces with that of known suspects, such as those included in forensic DNA databases [1, 2]. In consequence, perpetrators whose DNA profiles are unknown to the investigators cannot be identified. Together with current emergence of genetic prediction of appearance traits [3]

\* Correspondence: a.vidaki@erasmusmc.nl

Department of Genetic Identification, Erasmus MC University Medical Center Rotterdam, Room Ee1051, PO Box 2040, 3000 CA Rotterdam, The Netherlands



**Fig. 1** Questions to which forensic epigenomics is envisioned to provide answers in the future

and biogeographic ancestry [4], as well as epigenetic prediction of chronological age [3], epigenetic prediction of lifestyle and environmental exposures will allow further characterization of unknown perpetrators from DNA, which is useful in criminal cases where no DNA profile match has been obtained. If put into practice, such broadened DNA-based intelligence is expected to guide police investigations towards the most likely group of potential suspects.

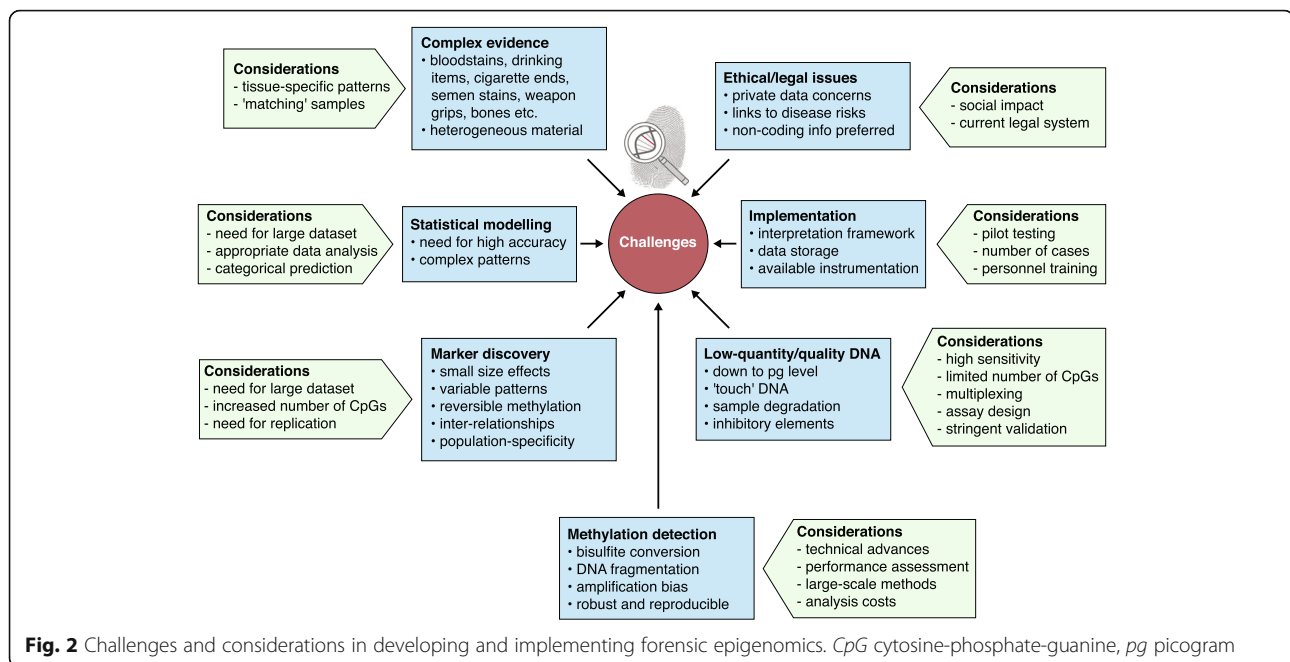
### Forensic requirements of epigenetic/epigenomic analysis

There are several requirements of forensic DNA analysis, which are determined by the low quality and quantity of DNA that is typically available from crime scene traces, which has consequences for the type and number of markers that can be analyzed, and the technology that can be used. These requirements also apply to forensic epigenetic/epigenomic analyses (Fig. 2). Moreover, there are additional technological challenges given the quantitative outcome of epigenetic/epigenomic analysis, in contrast to forensic genetics analysis, which is mostly qualitative.

The limited amount of human biological material available at crime scenes restricts the number of separate

DNA tests possible. In consequence, multiplex genotyping methods for the simultaneous analysis of several epigenetic markers at once are required in forensic analysis since single markers typically do not deliver enough forensically useful information. However, currently available technologies for the simultaneous analysis of a large number of epigenetic markers, such as DNA methylation microarrays and whole-genome bisulfite sequencing, are not suitable for forensic trace analysis because of the large input amounts of high-quality DNA they require. At the same time, current epigenetic analysis technologies that are able to deal with low-quality/quantity DNA, such as bisulfite pyrosequencing, methylation quantitative PCR, and EPITYPER<sup>®</sup>, are limited in their multiplexing capacities (fewer than 20 markers), which are often insufficient to fully address a forensic question of interest [18].

Amounts of DNA obtained from crime scene traces are often low, typically in the picogram–nanogram range. Therefore, highly sensitive technologies are needed in forensics to allow for reliable detection of DNA variation, including DNA methylation levels. Methods such as methylation SNaPshot with (albeit limited) multiplexing capacity currently have sensitivities down to a few



nanograms of DNA input per PCR [13, 19]. However, most current epigenetic methodologies require bisulfite conversion prior to marker analysis; the efficiency of converting unmethylated cytosines into uracils strongly depends on the DNA input. Typically, bisulfite conversion kits require a minimum of 50–200 ng DNA for reliable performance. Reduced DNA input leads to increased technical variation and thus an increased error range of the subsequent DNA methylation analysis. Highly sensitive technologies allowing for simultaneous analysis of large numbers of DNA methylation markers from low-quality/quantity DNA do not yet exist.

Crime scenes traces can consist of different cell types. While cell/tissue-type composition is mostly not restrictive in genetic analysis, it can be challenging in epigenetic analysis. Forensic epigenetic tests have to work equally well in all forensically relevant cell or tissue types or, if that is impossible, need to be tailored to specific tissue types, requiring tissue-type determination prior to epigenetic analysis. Some DNA methylation sites can show substantial differences between different tissues, which needs to be considered when applying previously established predictive marker sets and prediction models to a trace, which can be of a different tissue origin [20, 21]. Even if a large number of epigenetic markers provide tissue-independent information, such as for age prediction [22], reducing the number of markers due to technical constraints in forensic DNA analysis can lead to tissue specificity effects such as in forensic age prediction. Determining forensically relevant tissue types can be achieved via tissue-specific mRNA or microRNA markers [23, 24], which is already established in forensics. If the conclusion

of the epigenetic analysis depends on a direct comparison between crime scene material and reference samples, samples from the same tissue type should be used. However, additional challenges in interpretation can be encountered when analyzing heterogeneous forensic-type samples such as whole blood, consisting of different cell types with distinct epigenomes [25, 26].

When it comes to predictive DNA analysis in forensics (and beyond), the accuracy of predicting a trait from DNA, including methylation markers, should be as high as possible. Prediction accuracy should be investigated via different approaches and estimated via different measures in as many test samples as possible. Potential confounding DNA methylation effects [27] caused by a combination of factors such as age or environmental exposures should also be taken into account during interpretation, and properly tested before implementation. However, forensic DNA prediction is generally applied in cases where the police have little or no knowledge of the identity of the trace donor and how to find him/her. Hence, although high prediction accuracies are generally preferred in forensic DNA prediction, including when DNA methylation markers are used, lower accuracies may be accepted given what is known in a specific case and if other information available to the police already has low or unknown accuracies (for example, eyewitness statements).

### Current progress in forensic epigenetics

#### What type(s) of cells does the trace contain?

Along with standard DNA profiling, knowledge regarding the cell or tissue type(s) of the crime scene trace can provide crucial information for crime scene reconstruction,

since specific tissues indicate particular types of activity. Since epigenetics is involved in cell differentiation and gene expression regulation [28], identifying forensically relevant body fluids is possible using differentially methylated loci. Frumkin et al. [29] first highlighted the potential of epigenetic markers for semen trace determination. Subsequently, several studies have been published using various DNA methylation loci and analysis methods for different forensically relevant tissues [30–33]. Reported genes include *FOXO3* and *EFS* for blood [32, 34], *SLC12A8* and *BCAS4* for saliva [30, 34], *DACT1* and *C12orf12* for semen [31, 35], *LOC404266* and *HOXD9* for vaginal secretion [34], and *SLC26A10* and *LTBP3* for menstrual blood [13]. The reliable epigenetic determination of more complex body fluids such as menstrual blood can be more challenging, mainly due to the combination of different cell types and smaller methylation effects of currently proposed markers [13]. Until now, the only commercial test based on DNA methylation exists for seminal fluid [36, 37]. Non-commercial multiplex test systems targeting several tissues simultaneously have been published recently [13, 38], but currently have not been validated for acceptance in court. Despite the very recent introduction of such tests to criminal casework in some countries (for example, South Korea), future research regarding each marker's specificity across a wide range of tissues, inter- and intra-individual variation, in vitro stability, gender-, age- and/or ancestry-associated influences, as well as full assessment and validation of the proposed multiplex forensic systems, remains necessary to fully establish practical usefulness in criminal casework.

#### How old is the unknown trace donor?

Predicting the lifetime age of an unknown trace donor at time of trace deposition can help police to focus their investigation to find unknown perpetrators [3]. DNA methylation is strongly affected by ageing [22, 39, 40]. Picking-up on genome-wide scans using DNA methylation microarrays [22, 41, 42], forensic (epi)geneticists have started to establish age-associated sites as biomarkers of lifetime/chronological age at genes such as *ELOVL2*, *C1orf132*, *TRIM59*, *FHL2*, *ASPA*, *SCGN*, and *CSNK1* [14, 43–53]. Although an epigenetic age prediction model has been proposed that behaves similarly across human tissues [22], the number of CpGs used (353) is too large for multiplex-based trace analysis with current technologies. When reducing the number of age markers, tissue-specific effects of epigenetic age prediction are evident, so that tissue-specific marker sets and models need to be developed. Forensically motivated age prediction models based on a small number of CpGs have been built mainly for blood [14, 49, 50, 52–54] and less so for saliva [46, 55–57], semen [58], and teeth [44], which deliver age prediction with errors of around

$\pm 5$  years. However, gender-specific differences and higher errors for old, very young, and diseased individuals (for example, those suffering from age-associated conditions [59]) can be expected [14, 44, 48, 52, 53], which are attributed to the fact that, instead of lifetime age (that is, number of years alive), these epigenetic markers predict biological age (that is, a measure of age-related changes in body function or composition associated with one's ageing rate). Previous studies [48, 53] have highlighted greater variation in known age versus age predicted with DNA methylation markers for children and elderly people, relative to medium-aged people. This may illustrate the discrepancies between biological and chronological age as detected with epigenetic markers, which are expected to be larger during developmental lifetime and with advanced age compared with medium-aged people. However, most perpetrators of crime are of medium age. Forensically suitable commercial solutions are currently not available despite the increasing interest from police forces worldwide. However, we expect that further research and validation studies will identify robust markers that eventually will be pooled together in multiplex solutions for age estimation from crime scene traces.

#### Which twin is the trace donor?

Monozygotic (MZ) twins cannot be individually identified by standard forensic DNA analysis because they share the same DNA profile, which is a drawback for law enforcement. For a service based on ultra-deep whole genome sequencing to detect very rare somatic mutations, a company charges tens of thousands of Euros for a single twin case, which does not guarantee success [60]. Genetically identical MZ twins are sometimes discordant for certain phenotypes [61], indicating epigenetic involvement [6], and several studies have demonstrated that there is considerable epigenetic variation within MZ twin pairs. Although some studies have explored the value of epigenetic profiling in forensically discriminating MZ twins [62, 63], it is not yet fully established whether the observed twin-to-twin differences are twin pair-specific, or might be universal and applicable across twin pairs, as would be preferred. Recently, a first attempt was made to demonstrate the feasibility of differentiating between MZ twins using forensic epigenetics [15]. This study showed that most, but not all, twin-differentiating CpG sites (which were identified using genome-wide screening technologies in reference-type blood DNA) could be replicated by targeted methods that are suitable for forensics in trace-type DNA from bloodstains, highlighting technical challenges [15]. Another key issue that remains unclear concerns the number of epigenetic markers required to achieve statistically sound identification of individual MZ twins, which is

an issue as current screening technologies are not suitable for trace analysis. We expect that additional research testing the stability of DNA methylation differences over time and different tissues, technologies, and approaches will determine whether differential DNA methylation is indeed a suitable approach for addressing this forensic question.

### Future perspectives of forensic epigenomics

#### Is the unknown trace donor a smoker?

Despite tobacco smoking being widely recognized as having negative health outcomes, a large proportion of the world population still smokes: for example, 19–32% of Europeans [64]. The ability to predict smoking habits from trace DNA would be highly informative in characterizing an unknown trace donor, and thus useful in guiding investigations. Smoking is known to cause DNA damage and telomere shortening [65], and also epigenetic changes, which are caused by effects on DNA methyltransferase expression [66] and DNA methylation patterns [67]. Epigenetic effects of tobacco smoking are also related to cumulative smoke exposure (pack-years) and associated with time since quitting [68–70]. The first epigenome-wide association study (EWAS) in blood aimed to identify differential DNA methylation associated with smoking found a single CpG marker (*F2RL3*) [67]. Following more than 18 additional EWASs in thousands of individuals, various smoking-associated CpGs have been recognized in several genes, including *AHRR* [71–79], *ALPP2* [72–74, 76–78, 80, 81], *GFI1* [73, 74, 76, 82], *GPR15* [74, 75, 81], and *MYO1G* [73, 76, 81, 83]. However, the observed per-site DNA methylation differences are relatively small (usually less than 20%) [84]. While most studies have been performed in blood, smoking-associated CpGs have also been identified in other tissues such as lung [72, 79]. While epigenetic effects are persistent for long periods after smoking cessation, some are reversible [68, 77, 85]. One preliminary attempt to predict smoking habits using epigenetics tested a model combining four CpGs for the ability to differentiate between never ( $n = 120$ ) and former smokers ( $n = 45$ ), achieving a prediction accuracy of area under the curve (AUC) of 0.83 (AUC values range between 0.5 meaning random prediction and 1.0 meaning completely accurate prediction) [86]. Besides further increasing the prediction accuracy by adding more smoking-predictive CpGs, additional challenges should be considered in the future, such as population-specific effects [76, 87]. One important aspect here is the effect of maternal smoking during pregnancy (for example, 10.7% of pregnant American mothers have been reported to smoke [88]), which could cause similar epigenetic changes in the offspring, lasting into puberty and even adulthood. The influence of passive smoking, which could also impact the epigenome, needs to be

considered as well in future practical applications of epigenetics to smoking prediction.

#### Is the unknown trace donor a drinker?

Alcohol intake highly varies between countries and individuals (more than one-fifth of European adults experience weekly “binge” drinking [89]), and predicting drinking habits can be useful for investigative purposes. Forensic toxicological tests for alcohol metabolite detection exist for blood, urine, and hair, but do not allow inferences regarding regular drinking habits (i.e., how often and how much alcohol is consumed). Due to both genetic [90] and environmental factors [91], differential DNA methylation is evident in regular alcohol consumers versus non-drinkers. A significant increase in global blood methylation has been observed in chronic alcoholics [92], while genes such as the dopamine transporter [93] have been shown to be differentially methylated in alcohol-dependent individuals, although this finding has not yet been replicated in other studies [94]. The first EWAS for alcohol dependency revealed numerous epigenetic markers associated with alcohol metabolism [95], the majority of which (1702 CpGs,  $p < 0.005$ ) were hypomethylated in alcoholics versus non-drinkers (<17% difference). This finding, however, contradicts alcohol-associated hypermethylated genomes reported elsewhere [92, 96]. In another study, 865 hypomethylated and 716 hypermethylated CpGs were identified [97]. In the largest meta-analysis available, five CpGs were highlighted to explain a substantial proportion (5.2–15%) of interindividual variance in alcohol consumption and were thus proposed as biomarkers for heavy alcohol drinking [98]. A preliminary prediction study achieved  $AUC > 0.90$  based on 144 CpGs [98], a number that from a forensic standpoint is challengingly high due to limited crime scene material and current method capabilities. More candidate markers have been revealed recently, but with effects as small as 1–5% [99]. Alcohol-dependent epigenetic signatures are partly reversible upon abstinence [99] and, as with smoking, prenatal maternal alcohol intake (which occurs in 9.8% of pregnancies worldwide, 2017 [100]) alters gene-specific methylation in placental cord blood [101], and this could potentially lead to false-positive predictions. We expect that future research will identify robust markers to be included in a forensically suitable prediction tool.

#### Is the unknown trace donor an illicit drug user?

Illicit drug use is prevalent in adults, ranging from 1 to 41% depending on the country [102], and is therefore relevant in characterizing unknown trace donors. Commonly used drugs include cannabis, cocaine, and amphetamines. Depending on the country's legal framework, thousands of drug-related offences occur annually [102].

Similarly to alcohol, forensic toxicological tests are in widespread use; however, they do not provide information on history and habitual use (possibly except for hair analysis). Most studies on drug-induced epigenetic changes have been performed in animal models [103, 104], mainly focusing on chromatin structure and histone modifications [105]. Drug-induced DNA methylation changes have been recently investigated in animal brain regions and neural cells [106]. Global methylation levels were not different in mouse brain and liver following chronic heroin or cocaine treatment [104], but in human brain results were contradictory following methamphetamine dependence [107]. Applying candidate gene approaches, only cannabis and opioid epigenetic effects have been studied in blood thus far. Cannabis-dependent individuals demonstrated altered blood *CBI* methylation, which is also detected in cigarette smokers [108]. Almost 200 heroin addicts showed altered blood *OPRM1* methylation, but per-site changes were small (<4%) [109] and showed population differences [110]. These so-far small methylation differences indicate that larger numbers of individuals need to be included in association studies; however, due to expected difficulties in performing such studies with controlled drug use by study participants, this research question remains in its infancy. Future experiments are also needed to determine whether epigenetic differences are anticipated only in the brain (where the drugs' effects occur), or whether these are also detectable in forensically more relevant tissues, such as blood. Finally, drug dose-dependent and reversible effects are also expected.

#### **Are there any diet indications for the unknown trace donor?**

Predicting an unknown individual's diet can be of forensic relevance, when special diets are followed (e.g., vegetarian) or special foods are consumed that can potentially be linked with a particular characteristic, such as geographical location, tradition, and religion. Individual staple food comprises various major components such as fruits, vegetables, meat, and fish. Eventually, dietary differences are translated into different intakes of macro- and micronutrients, including carbohydrates, protein, fat, vitamins, and minerals. Nutritional epigenomics is a relatively new, but rapidly growing, research field [111]. Micronutrients including folate and B vitamins seem to play a key role as secondary methyl donors [112]. One of the first epigenome-wide studies demonstrated that prenatal exposure to famine causes lifelong methylation changes [113]. A cross-generational study identified 134 "nutrition-sensitive" regions, implicated with impairments in attention/cognition [114]. Comparing different eating patterns, European vegetarians were found to have approximately 40% decreased *MnSOD* buccal methylation

compared with omnivores [115], while in a smaller-scale study, plasma homocysteine levels showed a significant correlation with global blood DNA methylation in vegetarians [116]. Looking at specific macronutrients, mercury exposure via fish consumption causes *SEPP1* hypomethylation [117], and daily intake of roasted meat alters *p16* methylation in oesophageal tissue cells [118]. Dietary folate from fortified foods has also been positively associated with LINE-1 blood methylation [119]. Overall, diet involves complex, variable patterns and processes. It is unknown whether inter-relationships between different macro- and micronutrients exist and how unique the observed epigenetic effects are to a specific food type or nutrient. Nevertheless, we envision that future large-scale epigenetic analysis of different diet groups, such as vegetarians versus non-vegetarians, may allow the construction of prediction models that have the potential to be used in forensic applications.

#### **Is the unknown trace donor physically active?**

Information on an unknown person's physical activity levels might provide insights on their body structure and appearance, which is relevant when describing an unknown trace donor. Physical exercise can impact the epigenome [120] and regulate gene expression [121]. It is also involved in gene-environment interactions that reduce genetic effects on individuals' body mass index (BMI) [122]. Whereas cross-sectional and case-control studies revealed no significant correlation between physical activity and global blood methylation [123], LINE-1 methylation was increased in women maintaining higher physical activity over a long period of time [124]. Exercise-related epigenetic effects were also stronger in elderly populations [125], diseased individuals (*L3MBTL1*) [126], and in tissues such as fat (*TCF7L2*) [127] and skeletal muscle (*KCNQ1*) [128]. Being physically fitter or exercising regularly correlates with lower cancer gene methylation in saliva [129]. When testing the effects of regular moderate exercise on inflammatory response via epigenetic changes in blood, there was no effect regarding the *IL-6* [130] and *p15* [131] genes, but a reduced age-dependent *ASC* blood methylation was observed [131]. Thus far the effects of long-term, rather than acute, exercise have been studied, so it is unknown when methylation changes are established and become detectable in relation to timing of exercise. This research is still at early stages and ongoing, but future large-scale experiments including controlled exercise regimes for study participants have the potential to identify distinct exercise-related epigenetic differences. Depending on the outcomes, a forensic tool may be developed to predict whether an unknown trace donor is physically active or not.

### What is the body size/shape of the unknown trace donor?

While predicting categorical externally visible characteristics such as eye and hair color is already established [132], predicting dimension-based features, such as body height, is challenging due to their continuous quantitative nature. Although the genetic component of body height is large [133, 134], environmental factors explain about 20% of height variation. Due to the immense genetic complexity of height, despite very large genome-wide association studies (more than 250,000 subjects, the identified SNPs do not explain more than 27.4% of the phenotypic variation [135, 136]. For BMI, however, this figure is just 2.7% [137]. There is increasing evidence that epigenetic variation might play a role in shaping body height [138] and BMI [139]. The first study in humans identified that 83% of height-associated genes contain promoter CpG islands linked with gene regulation, half of which had significant DNA hypermethylation modules [138]. While there is currently no published EWAS for height, studies in other species such as *Arabidopsis thaliana* [140], ants [141], and sheep [142] have identified height-associated methylation in body-size-related genes. In the case of BMI, where EWASs have been carried out for humans [139], birth-weight discordant twins did not show significantly different epigenome-wide profiles [143], but three CpGs (in the gene *HIF3A*) were found to be significantly associated with BMI in a larger cohort of unrelated individuals [139]. For every 10% methylation increase of cg22891070, BMI was approximately 3% higher [139]; however, these effects were not replicated in adolescents [144]. Following a comprehensive scan of about four million CpGs, four BMI-associated variably methylated regions (*PM20D1*, *MMP9*, *PRKG1*, and *RFC5*) were discovered [16]. In the largest meta-analysis to date, the BMI-associated DNA methylations levels for 187 loci were successfully replicated in multiple tissues and ethnic groups [145]. In another study in CD4+ T cells, eight additional BMI- and waist circumference-related CpGs were identified [146]. We envision that currently identified CpGs, together with future outcomes from large-scale epigenetic studies, may form a suitable marker pool for a future forensic tool to predict a person's body height and weight, which in combination with physical activity information can create a more detailed picture of the physique of an unknown individual.

### In which geographic region does the unknown trace donor live?

Predicting biogeographic ancestry via small sets of genetic markers is feasible in current forensic testing, at least at the continental level [4]. However, the geographic regions where the ancestors of a person

originate from is not necessarily the same as the region where the individual lives (residency), especially in the current age of globalization [147]. Currently, residency can be inferred via isotope analysis [148], but this is unsuitable to crime scene traces. Genetic geographic population substructure, which is the basis of genetic ancestry inference, is caused by human migration and positive selection via local genetic adaptation to environmental factors, which occur over large periods of time involving multiple generations. By contrast, epigenetic geographic population substructure influenced by local environmental factors is produced much more quickly, and within a person's lifetime. Giuliani et al. proposed that the factors influencing spatial epigenetic variation are mainly nutrients, UVA exposure, and pathogens [149]. Distinct epigenetic changes due to chronic sun exposure have been found in human skin (*KRT75*) [150], while environmental chemicals such as cadmium exposure via soil in Thai populations [151] and phthalate exposure via household products in the USA [152] affect gene-specific DNA methylation. Apart from metals and organic pollutants [153], others such as water contaminants and airborne pollution could have similar effects. Lifetime exposure to undesired disinfection products formed during water treatment caused methylation differences in 140 CpGs in Spanish individuals [154], while mitochondrial DNA (mtDNA) methylation was altered in Italian steel workers due to their high exposure to metal-rich particulate matter [155]. Nevertheless, these mtDNA methylation changes are considered minute, since overall mtDNA methylation seems to be less than 6% [156]. Overall, we regard it as likely that, besides biogeographic ancestry information from genetic markers, additional residence information via epigenetic profiling will become available in the near future with additional benefits for investigative use.

### Are there hints about the socioeconomic status of the unknown trace donor?

Socioeconomic status (SES) is often measured as a combination of education, occupation, income, and marital status, thus viewed as a continuous variable; it is conceptualized as the social class of an individual, associated with behavioral features and disease risks [157–159]. While complex and highly variable, information about the SES of an unknown trace donor could help police target their investigations. Together with genetics and physical environment, social factors also impact on epigenetic variation [160]. Well-defined epigenetic patterns have been linked to both childhood and adulthood socioeconomic environment [161]. Early-life SES was found to be associated with altered methylation in three CpG sites in blood, but the methylation effects were low

(<5%) [162]. Following candidate gene approaches in multiple populations, SES-associated methylation was also reported in stress-related (*AVP*, *FKBP5*, *OXTR*) and inflammation-related (*CCL1*, *CD1D*, *NFATC1*) genes [163, 164]. In another study, low-SES was also linked with altered methylation of the serotonin transporter gene [165, 166]. Looking at global DNA methylation and job status in particular, manual workers demonstrated 24% global hypomethylation compared with non-manual workers [167]. Various SES-associated factors, including family income at birth [168], adult education [168], maternal education [169], parenting [170], and status of single parent family [168], have all been linked with altered methylation at specific genomic locations. While this research is still ongoing, following comprehensive characterization of SES-associated effects it might be possible in the near future to be able to translate an individual's epigenome into clues regarding their educational, occupational, and marital status; however, distinct predictions might be unlikely.

### **Ethical and societal issues of forensic epigenomics**

Predicting lifestyle and environmental factors of unknown forensic trace donors via epigenomic profiling may raise ethical and social issues and concerns and, depending on a country's legal framework, may require legislation regulations before being put into forensic practice. DNA-based prediction of appearance traits and biogeographic ancestry for investigative purposes (referred to as forensic DNA phenotyping (FDP) [3]) has already given rise to such issues, and opinions between expert scientists vary [2, 3, 171–173]. To date only a few European countries allow FDP in forensic practice, such as the Netherlands, UK, and France [3, 174], as well as some states in the USA. Notably, this situation is currently changing, as policy makers in some countries, such as Germany and Switzerland, are considering allowing appearance and ancestry DNA testing for investigative forensic use. In other European countries, including Spain, Sweden, and Poland, FDP can be legally practiced as legal restrictions apply only to genetic markers used in forensic DNA databases.

It could be argued that ethical concerns regarding privacy protection and the right not-to-know (and thus not wanting others to know) are less pressing regarding the genetic prediction of obvious appearance traits because their external visibility cannot be considered private. This reasoning may also apply to epigenetic prediction of those lifestyle factors that are obviously visible, such as tobacco smoking, or those that are generally viewed positively, such as physical activity. However, lifestyle factors with epigenetic signatures that are generally viewed negatively may be hidden by individuals from

public exposure, which makes privacy issues more of a concern. Nevertheless, as previously discussed among ethics experts, some unhealthy lifestyle factors, such as smoking, are considered non-sensitive behavioral traits, while others, such as alcohol drinking, belong to a middle category of “somewhat but not too sensitive” traits [175], in contrast to those, such as use of illicit drugs, that are legally forbidden. Some lifestyle and environmental factors represent known risk factors for diseases, where the right not-to-know can apply (regarding the disease risk); however, based on current knowledge, none of these factors provides a direct link with sensitive medical information, which should make their epigenetic prediction less problematic.

In contrast to genetic data in forensic DNA profiling, and as with genetic data from appearance and ancestry prediction, epigenetic/epigenomic data from lifestyle prediction are not stored in central forensic databases. Only the trait information (that is, the probability of displaying a certain trait or being influenced by a certain lifestyle factor), but no actual genetic/epigenetic data, should be communicated to the police for use in investigations. Ethical and societal issues of probabilistic epigenomic lifestyle prediction should be discussed among interdisciplinary groups of experts, including representatives with (epi)genetics, forensic, ethics, social, and law expertise, before practical applications can be considered.

### **Conclusions**

Epigenetic applications in forensics are relatively new and currently limited, but we expect a rapid development towards forensic epigenomics in the near future. While today only three forensically relevant issues are investigated via epigenetics, we envision an expansion towards forensic epigenomics for addressing at least some of the investigative questions proposed here. The extent to which such broadening of forensic epigenetics into forensic epigenomics will happen will depend on several factors. First, further scientific progress in cataloguing and understanding epigenetic signatures of lifestyle and environmental factors. Second, identifying epigenetic markers and building/validating statistical models for accurate epigenetic lifestyle prediction. Third, technical progress in simultaneous analysis of large numbers of epigenetic markers from low-quality/quantity DNA (potentially through new technologies such as Oxford Nanopore sequencing) and developing/forensically validating sensitive multiplex analysis assays. Finally, ethical and societal discussions on the benefit versus risk of using such human epigenetic data in forensic practice with consequent legal implementations if deemed necessary. If it is eventually applied in forensic practice, epigenomic prediction of lifestyle/environmental factors will



enhance DNA investigative intelligence by complementing genetic prediction of appearance and biogeographic ancestry and epigenetic prediction of lifetime age, all aiming to guide police investigations towards finding unknown perpetrators of crime who are unidentifiable with standard forensic DNA profiling.

#### Abbreviations

AUC: Area under the curve; BMI: Body mass index; CpG: Cytosine-phosphate-guanine; EWAS: Epigenome-wide association study; FDP: Forensic DNA phenotyping; mtDNA: Mitochondrial DNA; MZ: Monozygotic; SES: Socioeconomic status

#### Acknowledgements

The authors thank Jordana Bell, Wojciech Branicki, Hwan Young Lee, Barbara Prainsack, and Bas Heijmans for their useful comments on an earlier version of the manuscript. The work of both authors, including on epigenetic variation and its potential applications to forensics and other fields, is supported by the Erasmus MC University Medical Center Rotterdam. The authors received additional support from the European Union's Horizon 2020 Research and Innovation programme under grant agreement number 740580 within the framework of the Visible Attributes Through Genomics (VISAGE) Project and Consortium.

#### Authors' contributions

AV conceptualized this work, produced the figures, and wrote the first draft. Both authors wrote the final version of the manuscript.

#### Competing interests

The authors declare that they have no competing interests.

#### Publisher's note

Springer Nature remains neutral with regard to jurisdictional claims in published maps and institutional affiliations.

Published online: 21 December 2017

#### References

- Jobling MA, Gill P. Encoded evidence: DNA in forensic analysis. *Nat Rev Genet.* 2004;5:739–51.
- Kayser M, de Knijff P. Improving human forensics through advances in genetics, genomics and molecular biology. *Nat Rev Genet.* 2011;12:179–92.
- Kayser M. Forensic DNA, phenotyping: predicting human appearance from crime scene material for investigative purposes. *Forensic Sci Int Genet.* 2015;18:33–48.
- Phillips C. Forensic genetic analysis of bio-geographical ancestry. *Forensic Sci Int Genet.* 2015;18:49–65.
- Bird A. Perceptions of epigenetics. *Nature.* 2007;447:396–8.
- Yet I, Tsai PC, Castillo-Fernandez JE, Carnero-Montoro E, Bell JT. Genetic and environmental impacts on DNA methylation levels in twins. *Epigenomics.* 2016;8:105–17.
- Terry MB, Delgado-Cruzata L, Vib-Raviv N, Wu HC, Santella RM. DNA methylation in white blood cells – association with risk factors in epidemiologic studies. *Epigenetics.* 2011;6:828–37.
- Sharma R, Beidenharn KR, Fedor JM, Agarwal A. Lifestyle factors and reproductive health: taking control of your fertility. *Reprod Biol Endocrinol.* 2013;11:66.
- Heyn H, Moran S, Hernando-Herraez I, Sayols S, Gomez A, Sandoval J, et al. DNA methylation contributes to natural human variation. *Genome Res.* 2013;23:1363–72.
- Tollefsbol T. *Personalised epigenetics.* 1st ed. USA: Elsevier; 2015.
- Naito E, Dewa K, Yamanouchi H, Takagi S, Kominami R. Sex determination using the hypomethylation of a human macro-satellite DXZ4 in female cells. *Nucleic Acids Res.* 1993;21:2533–4.
- Vidaki A, Daniel B, Court DS. Forensic DNA methylation profiling—potential opportunities and challenges. *Forensic Sci Int Genet.* 2013;7:499–507.
- Lee HY, Jung SE, Lee EH, Yang WI, Shin KJ. DNA methylation profiling for a confirmatory test for blood, saliva, semen, vaginal fluid and menstrual blood. *Forensic Sci Int Genet.* 2016;24:75–82.
- Vidaki A, Ballard D, Aliferi A, Miller TH, Barron LP, Syndercombe Court D. DNA methylation-based forensic age prediction using artificial neural networks and next generation sequencing. *Forensic Sci Int Genet.* 2017;28:225–36.
- Vidaki A, Diez Lopez C, Carnero-Montoro E, Ralf A, Ward K, Spector T, et al. Epigenetic discrimination of identical twins from blood under the forensic scenario. *Forensic Sci Int Genet.* 2017;31:67–80.
- Feinberg AP, Irizarry RA, Fradin D, Aryee MJ, Murakami P, Aspelund T, et al. Personalized epigenomic signatures that are stable over time and covary with body mass index. *Sci Transl Med.* 2010;2:49ra67.
- Kovatsi L, Vidaki A, Fragou D, Syndercombe Court D. Epigenetic fingerprint. In: Tollefsbol T, editor. *Personalised epigenetics.* 1st ed. USA: Elsevier; 2015. p. 221–43.
- Olkhov-Mitsel E, Bapat B. Strategies for discovery and validation of methylated and hydroxymethylated DNA biomarkers. *Cancer Med.* 2012;1:237–60.
- Kaminsky Z, Petronis A. Methylation SNaPshot: a method for the quantification of site-specific DNA methylation levels. *Methods Mol Biol.* 2009;507:241–55.
- Varley KE, Gertz J, Bowling KM, Parker SL, Reddy TE, Pauli-Behn F, et al. Dynamic DNA methylation across diverse human cell lines and tissues. *Genome Res.* 2013;23:555–67.
- Zhang B, Zhou Y, Lin N, Lowdon RF, Hong C, Nagarajan RP, et al. Functional DNA methylation differences between tissues, cell types, and across individuals discovered using the M&M algorithm. *Genome Res.* 2013;23:1522–40.
- Horvath S. DNA methylation age of human tissues and cell types. *Genome Biol.* 2013;14:1–19.
- Lindenbergh A, de Pagter M, Ramdayal G, Visser M, Zubakov D, Kayser M, et al. A multiplex (m)RNA-profiling system for the forensic identification of body fluids and contact traces. *Forensic Sci Int Genet.* 2012;6:565–77.
- Sauer E, Reinke AK, Courts C. Differentiation of five body fluids from forensic samples by expression analysis of four microRNAs using quantitative PCR. *Forensic Sci Int Genet.* 2016;22:89–99.
- Zilbauer M, Rayner TF, Clark C, Coffey AJ, Joyce CJ, Palta P, et al. Genome-wide methylation analyses of primary human leukocyte subsets identifies functionally important cell-type-specific hypomethylated regions. *Blood.* 2013;122:e52–60.
- Houseman EA, Accomando WP, Koestler DC, Christensen BC, Marsit CJ, Nelson HH, et al. DNA methylation arrays as surrogate measures of cell mixture distribution. *BMC Bioinformatics.* 2012;13:86.
- Karlsson Linner R, Marioni RE, Rietveld CA, Simpkin AJ, Davies NM, Watanabe K, et al. An epigenome-wide association study meta-analysis of educational attainment. *Mol Psychiatry.* 2017. doi:10.1038/mp.2017.210.
- Song F, Mahmood S, Ghosh S, Liang P, Smiraglia DJ, Nagase H, et al. Tissue specific differentially methylated regions (TDMR): changes in DNA methylation during development. *Genomics.* 2009;93:130–9.
- Frumkin D, Wasserstrom A, Budowle B, Davidson A. DNA methylation-based forensic tissue identification. *Forensic Sci Int Genet.* 2011;5:517–24.
- Madi T, Balamurugan K, Bombardi R, Duncan G, McCord B. The determination of tissue-specific DNA methylation patterns in forensic biofluids using bisulfite modification and pyrosequencing. *Electrophoresis.* 2012;33:1736–45.
- Vidaki A, Giangasparo F, Syndercombe Court D. Discovery of potential DNA methylation markers for forensic tissue identification using bisulphite pyrosequencing. *Electrophoresis.* 2016;37:2767–79.
- Vidaki A, Johansson C, Giangasparo F, Syndercombe Court D. Differentially methylated embryonal Fyn-associated substrate (EFS) gene as a blood-specific epigenetic marker and its potential application in forensic casework. *Forensic Sci Int Genet.* 2017;29:165–73.
- Forat S, Huettel B, Reinhardt R, Fimmers R, Haidl G, Denschlag D, et al. Methylation markers for the identification of body fluids and tissues from forensic trace evidence. *PLoS One.* 2016;11, e0147973.
- Park JL, Kwon OH, Kim JH, Yoo HS, Lee HC, Woo KM, et al. Identification of body fluid-specific DNA methylation markers for use in forensic science. *Forensic Sci Int Genet.* 2014;13C:147–53.
- An JH, Choi A, Shin KJ, Yang WI, Lee HY. DNA methylation-specific multiplex assays for body fluid identification. *Int J Legal Med.* 2013;127:35–43.
- Wasserstrom A, Frumkin D, Davidson A, Shpitz M, Herman Y, Gafny R. Demonstration of DSI-semen—a novel DNA methylation-based forensic semen identification assay. *Forensic Sci Int Genet.* 2013;7:136–42.
- LaRue BL, King JL, Budowle B. A validation study of the Nucleix DSI-Semen kit – a methylation-based assay for semen identification. *Int J Legal Med.* 2013;127:299–308.

38. Holtkotter H, Beyer V, Schwender K, Glaub A, Johann KS, Schurenkamp M, et al. Independent validation of body fluid-specific CpG markers and construction of a robust multiplex assay. *Forensic Sci Int Genet.* 2017;29:261–8.
39. Bell JT, Tsai PC, Yang TP, Pidsley R, Nisbet J, Glass D, et al. Epigenome-wide scans identify differentially methylated regions for age and age-related phenotypes in a healthy ageing population. *PLoS Genet.* 2012;8, e1002629.
40. Koch CM, Wagner W. Epigenetic-aging-signature to determine age in different tissues. *Aging.* 2011;3:1–10.
41. Hannum G, Guinney J, Zhao L, Zhang L, Hughes G, Sada S, et al. Genome-wide methylation profiles reveal quantitative views of human aging rates. *Mol Cell.* 2013;49:359–67.
42. Weidner CI, Lin Q, Koch CM, Eisele L, Beier F, Ziegler P, et al. Aging of blood can be tracked by DNA methylation changes at just three CpG sites. *Genome Biol.* 2014;15:1–11.
43. Yi SH, Xu LC, Mei K, Yang RZ, Huang DX. Isolation and identification of age-related DNA methylation markers for forensic age-prediction. *Forensic Sci Int Genet.* 2014;11:117–25.
44. Bekaert B, Kamalandua A, Zapico SC, Van de Voorde W, Decorte R. Improved age determination of blood and teeth samples using a selected set of DNA methylation markers. *Epigenetics.* 2015;10:922–30.
45. Huang Y, Yan J, Hou J, Fu X, Li L, Hou Y. Developing a DNA methylation assay for human age prediction in blood and bloodstain. *Forensic Sci Int Genet.* 2015;17:129–36.
46. Soares Bispo Santos Silva D, Antunes J, Balamurugan K, Duncan G, Sampaio Alho C, McCord B. Evaluation of DNA methylation markers and their potential to predict human aging. *Electrophoresis.* 2015;36:1775–80.
47. Zbić-Piekarska R, Spólnicka M, Kupiec T, Makowska Z, Spas A, Parys-Proszek A, et al. Examination of DNA methylation status of the ELOVL2 marker may be useful for human age prediction in forensic science. *Forensic Sci Int Genet.* 2015;14:161–7.
48. Zbić-Piekarska R, Spólnicka M, Kupiec T, Parys-Proszek A, Makowska Z, Paleczka A, et al. Development of a forensically useful age prediction method based on DNA methylation analysis. *Forensic Sci Int Genet.* 2015;17:173–9.
49. Hamano Y, Manabe S, Morimoto C, Fujimoto S, Ozeki M, Tamaki K. Forensic age prediction for dead or living samples by use of methylation-sensitive high resolution melting. *Leg Med (Tokyo).* 2016;21:5–10.
50. Park JL, Kim JH, Seo E, Bae DH, Kim SY, Lee HC, et al. Identification and evaluation of age-correlated DNA methylation markers for forensic use. *Forensic Sci Int Genet.* 2016;23:64–70.
51. Xu C, Qu H, Wang G, Xie B, Shi Y, Yang Y, et al. A novel strategy for forensic age prediction by DNA methylation and support vector regression model. *Sci Rep.* 2015;5:17788.
52. Freire-Aradas A, Phillips C, Mosquera-Miguel A, Girón-Santamaría L, Gómez-Tato A, Casares de Cal M, et al. Development of a methylation marker set for forensic age estimation using analysis of public methylation data and the Agena Bioscience EpiTYPER system. *Forensic Sci Int Genet.* 2016;24:65–74.
53. Zubakov D, Liu F, Kokmeijer I, Choi Y, van Meurs JBJ, van Ijcken WFJ, et al. Human age estimation from blood using mRNA, DNA methylation, DNA rearrangement, and telomere length. *Forensic Sci Int Genet.* 2016;24:33–43.
54. Mawlood SK, Dennany L, Watson N, Pickard BS. The EpiTect Methyl qPCR Assay as novel age estimation method in forensic biology. *Forensic Sci Int.* 2016;264:132–8.
55. Bocklandt S, Lin W, Sehl ME, Sanchez FJ, Sinsheimer JS, Horvath S, et al. Epigenetic predictor of age. *PLoS One.* 2011;6:1–6.
56. Hong SR, Jung SE, Lee EH, Shin KJ, Yang WI, Lee HY. DNA methylation-based age prediction from saliva: High age predictability by combination of 7 CpG markers. *Forensic Sci Int Genet.* 2017;29:118–25.
57. Eipel M, Mayer F, Arent T, Ferreira MRP, Birkhofer C, Gerstenmaier U, et al. Epigenetic age predictions based on buccal swabs are more precise in combination with cell type-specific DNA methylation signatures. *Aging.* 2016;8:1034–44.
58. Lee HY, Jung SE, Oh YN, Choi A, Yang WI, Shin KJ. Epigenetic age signatures in the forensically relevant body fluid of semen: a preliminary study. *Forensic Sci Int Genet.* 2015;19:28–34.
59. Spólnicka M, Pospiech E, Peplonska B, Zbić-Piekarska R, Makowska Z, Pieta A, et al. DNA methylation in ELOVL2 and C1orf132 correctly predicted chronological age of individuals from three disease groups. *Int J Legal Med.* 2017. doi:10.1007/s00414-017-1636-0.
60. Weber-Lehmann J, Schilling E, Gradl G, Richter DC, Wiehler J, Rolf B. Finding the needle in the haystack: differentiating “identical” twins in paternity testing and forensics by ultra-deep next generation sequencing. *Forensic Sci Int Genet.* 2014;9:42–6.
61. Wong AH, Gottesman II, Petronis A. Phenotypic differences in genetically identical organisms: the epigenetic perspective. *Hum Mol Genet.* 2005;14 Spec No 1:R11–8.
62. Li C, Zhao S, Zhang N, Zhang S, Hou Y. Differences of DNA methylation profiles between monozygotic twins’ blood samples. *Mol Biol Rep.* 2013;40:5275–80.
63. Du Q, Zhu G, Fu G, Zhang X, Fu L, Li S, et al. A genome-wide scan of DNA methylation markers for distinguishing monozygotic twins. *Twin Res Hum Genet.* 2015;18:670–9.
64. Eurostat. Tobacco consumption statistics. [http://ec.europa.eu/eurostat/statistics-explained/index.php/Tobacco\\_consumption\\_statistics](http://ec.europa.eu/eurostat/statistics-explained/index.php/Tobacco_consumption_statistics). Accessed 15 Nov 2017.
65. Huang J, Okuka M, Lu W, Tsibris JC, McLean MP, Keefe DL, et al. Telomere shortening and DNA damage of embryonic stem cells induced by cigarette smoke. *Reprod Toxicol.* 2013;35:89–95.
66. Satta R, Maloku E, Zhubi A, Pibiri F, Hajos M, Costa E, et al. Nicotine decreases DNA methyltransferase 1 expression and glutamic acid decarboxylase 67 promoter methylation in GABAergic interneurons. *Proc Natl Acad Sci U S A.* 2008;105:16356–61.
67. Breitling LP, Yang R, Korn B, Burwinkel B, Brenner H. Tobacco-smoking-related differential DNA methylation: 27 K discovery and replication. *Am J Hum Genet.* 2011;88:450–7.
68. Wan ES, Qiu W, Baccarelli A, Carey VJ, Bacherman H, Rennard SI, et al. Cigarette smoking behaviours and time since quitting are associated with differential DNA methylation across the human genome. *Hum Mol Genet.* 2012;21:3073–82.
69. Steenaard RV, Ligthart S, Stolk L, Peters MJ, Van Meurs JB, Uitterlinden AG, et al. Tobacco smoking is associated with methylation of genes related to coronary artery disease. *Clin Epigenetics.* 2015;7:54.
70. Zhang Y, Schottker B, Florath I, Stock C, Butterbach K, Hollecsek B, et al. Smoking-associated DNA methylation biomarkers and their predictive value for all-cause and cardiovascular mortality. *Environ Health Perspect.* 2016;124:67–74.
71. Philibert RA, Beach SRH, Lei MK, Brody GH. Changes in DNA methylation at the aryl hydrocarbon receptor repressor may be a new biomarker for smoking. *Clin Epigenetics.* 2013;5:19.
72. Shenker NS, Polidoro S, van Veldhoven K, Sacerdote C, Ricceri F, Birrell MA, et al. Epigenome-wide association study in the European Prospective Investigation into Cancer and Nutrition (EPIC-Turin) identifies novel genetic loci associated with smoking. *Hum Mol Genet.* 2013;22:843–51.
73. Zeilinger S, Kühnel B, Klopp N, Baurecht H, Kleinschmidt A, Gieger C, et al. Tobacco smoking leads to extensive genome-wide changes in DNA methylation. *PLoS One.* 2013;8, e63812.
74. Besing W, Johansson A. Smoke-related DNA methylation changes in the etiology of human disease. *Hum Mol Genet.* 2014;23:2290–7.
75. Dogan MV, Shields B, Cutrona C, Gao L, Gibbons FX, Simons R, et al. The effect of smoking on DNA methylation of peripheral blood mononuclear cells from African American women. *BMC Genomics.* 2014;15:151.
76. Elliott HR, Tillin T, McArdle WL, Ho K, Duggirala A, Frayling TM, et al. Differences in smoking associated DNA methylation patterns in South Asians and Europeans. *Clin Epigenetics.* 2014;6:4.
77. Tsaprouni LG, Yang TP, Bell J, Dick KJ, Kanoni S, Nisbet J, et al. Cigarette smoking reduces DNA methylation levels at multiple genomic loci but the effect is partially reversible upon cessation. *Epigenetics.* 2014;9:1382–96.
78. Allione A, Marcon F, Fiorito G, Guarrera S, Siniscalchi E, Zijno A, et al. Novel epigenetic changes unveiled by monozygotic twins discordant for smoking habits. *PLoS One.* 2015;10, e0128265.
79. Monick MM, Beach SR, Plume J, Sears R, Gerrard M, Brody GH, et al. Coordinated changes in AHR methylation in lymphoblasts and pulmonary macrophages from smokers. *Am J Med Genet B Neuropsychiatr Genet.* 2012;159B:141–51.
80. Harlid S, Xu Z, Panduri V, Sandler DP, Taylor JA. CpG sites associated with cigarette smoking: Analysis of epigenome-wide data from the sister study. *Environ Health Perspect.* 2014;122:673–8.
81. Sayols-Baixeras S, Lluís-Ganella C, Subirana I, Salas LA, Vilahur N, Corella D, et al. Identification of a new locus and validation of previously reported loci showing differential methylation associated with smoking. *The REGICOR study.* *Epigenetics.* 2015;10:1156–65.
82. Zaghlool SB, Al-Shafai M, Al-Muftah WA, Kumar P, Falchi M, Suhre K. Association of DNA methylation with age, gender, and smoking in an Arab population. *Clin Epigenetics.* 2015;7:6.

83. Ambatipudi S, Cuenin C, Hernandez-Vargas H, Ghantous A, Le Calvez-Kelm F, Kaaks R, et al. Tobacco smoking-associated genome-wide DNA methylation changes in the EPIC study. *Epigenomics*. 2016;8:599–618.
84. Gao X, Jia M, Zhang Y, Breiting LP, Brenner H. DNA methylation changes of whole blood cells in response to active smoking exposure in adults—a systematic review of DNA methylation studies. *Clin Epigenetics*. 2015;7:113.
85. Guida F, Sandanger TM, Castagne R, Campanella G, Polidoro S, Palli D, et al. Dynamics of smoking-induced genome-wide methylation changes with time since smoking cessation. *Hum Mol Genet*. 2015;24:2349–59.
86. Shenker NS, Ueland PM, Polidoro S, van Veldhoven K, Ricceri F, Brown R, et al. DNA methylation as a long-term biomarker of exposure to tobacco smoke. *Epidemiology*. 2013;24:712–6.
87. Zhu X, Li J, Deng S, Yu K, Liu X, Deng Q, et al. Genome-wide analysis of DNA methylation and cigarette smoking in a Chinese population. *Environ Health Perspect*. 2016;124:966–73.
88. Tong VT, Dietz PM, Morrow B, D'Angelo DV, Farr SL, Rockhill KM, et al. Trends in smoking before, during, and after pregnancy—pregnancy risk assessment monitoring system, United States, 40 sites, 2000–2010. *MMWR Surveill Summ*. 2013;62:1–19.
89. Shield KD, Rylett M, Rehm J. Trends in alcohol consumption and attributable mortality in the WHO European Region, 1990–2014. In: *Public health successes and missed opportunities*. Copenhagen: World Health Organization; 2016. p. viii-x
90. Treutlein J, Cichon S, Ridinger M, Wodarz N, Soyka M, Zill P, et al. Genome-wide association study of alcohol dependence. *Arch Gen Psychiatry*. 2009;66:773–84.
91. Zhang H, Wang F, Kranzler HR, Zhao H, Gelernter J. Profiling of childhood adversity-associated DNA methylation changes in alcoholic patients and healthy controls. *PLoS One*. 2013;8, e65648.
92. Bönsch D, Lenz B, Reulbach U, Kornhuber J, Bleich S. Homocysteine associated genomic DNA hypermethylation in patients with chronic alcoholism. *J Neural Transm (Vienna)*. 2004;111:1611–6.
93. Hillemecher T, Frieling H, Hartl T, Wilhelm J, Kornhuber J, Bleich S. Promoter specific methylation of the dopamine transporter gene is altered in alcohol dependence and associated with craving. *J Psychiatr Res*. 2009;43:388–92.
94. Nieratschker V, Grosshans M, Frank J, Strohmaier J, von der Goltz C, El-Maarri O, et al. Epigenetic alteration of the dopamine transporter gene in alcohol-dependent patients is associated with age. *Addict Biol*. 2014;19:305–11.
95. Zhang R, Miao Q, Wang C, Zhao R, Li W, Haile CN, et al. Genome-wide DNA methylation analysis in alcohol dependence. *Addict Biol*. 2013;18:392–403.
96. Semmler A, Heese P, Stoffel-Wagner B, Muschler M, Heberlein A, Bigler L, et al. Alcohol abuse and cigarette smoking are associated with global DNA hypermethylation: results from the German Investigation on Neurobiology in Alcoholism (GINA). *Alcohol*. 2015;49:97–101.
97. Zhao R, Zhang R, Li W, Liao Y, Tang J, Miao Q, et al. Genome-wide DNA methylation patterns in discordant sib pairs with alcohol dependence. *Asia Pac Psychiatry*. 2013;5:39–50.
98. Liu C, Marioni RE, Hedman AK, Pfeiffer L, Tsai PC, Reynolds LM, et al. A DNA methylation biomarker of alcohol consumption. *Mol Psychiatry*. 2016. doi:10.1038/mp.2016.192.
99. Philibert RA, Penaluna B, White T, Shires S, Gunter T, Liesveld J, et al. A pilot examination of the genome-wide DNA methylation signatures of subjects entering and exiting short-term alcohol dependence treatment programs. *Epigenetics*. 2014;9:1212–9.
100. Popova S, Lange S, Probst C, Gmel G, Rehm J. Estimation of national, regional, and global prevalence of alcohol use during pregnancy and fetal alcohol syndrome: a systematic review and meta-analysis. *Lancet Glob Health*. 2017;5:e209–99.
101. Azzi S, Sas TC, Koudou Y, Le Bouc Y, Souberbielle JC, Dargent-Molina P, et al. Degree of methylation of ZAC1 (PLAGL1) is associated with prenatal and post-natal growth in healthy infants of the EDEN mother child cohort. *Epigenetics*. 2014;9:338–45.
102. European Monitoring Centre for Drugs and Drug Addiction. *Statistical Bulletin 2016* [Archive]: Data and statistics. 2016. <http://www.emcdda.europa.eu/data/stats2016#displayTable:GPS-106>. Accessed 15 Nov 2017.
103. Massart R, Barnea R, Dikshtein Y, Suderman M, Meir O, Hallett M, et al. Role of DNA methylation in the nucleus accumbens in incubation of cocaine craving. *J Neurosci*. 2015;35:8042–58.
104. Fragou D, Zanos P, Kouidou S, Njau S, Kitchen I, Bailey A, et al. Effect of chronic heroin and cocaine administration on global DNA methylation in brain and liver. *Toxicol Lett*. 2013;218:260–5.
105. Renthal W, Nestler EJ. Epigenetic mechanisms in drug addiction. *Trends Mol Med*. 2008;14:341–50.
106. Cecil CAM, Walton E, Viding E. DNA methylation, substance use and addiction: a systematic review of recent animal and human research from a developmental perspective. *Curr Addict Rep*. 2015;2:331–46.
107. Desplats P, Dumaop W, Cronin P, Gianella S, Woods S, Letendre S, et al. Epigenetic alterations in the brain associated with HIV-1 infection and methamphetamine dependence. *PLoS One*. 2014;9, e102555.
108. Rotter A, Bayerlein K, Hansbauer M, Weiland J, Sperling W, Kornhuber J, et al. CB1 and CB2 receptor expression and promoter methylation in patients with cannabis dependence. *Eur Addict Res*. 2013;19:13–20.
109. Nielsen DA, Yuferov V, Hamon S, Jackson C, Ho A, Ott J, et al. Increased OPRM1 DNA methylation in lymphocytes of methadone-maintained former heroin addicts. *Neuropsychopharmacology*. 2009;34:867–73.
110. Nielsen DA, Hamon S, Yuferov V, Jackson C, Ho A, Ott J, et al. Ethnic diversity of DNA methylation in the OPRM1 promoter region in lymphocytes of heroin addicts. *Hum Genet*. 2010;127:639–49.
111. Jimenez-Chillaron JC, Diaz R, Martinez D, Pentinat T, Ramon-Krauel M, Ribo S, et al. The role of nutrition on epigenetic modifications and their implications on health. *Biochimie*. 2012;94:2242–63.
112. Anderson OS, Sant KE, Dolinoy DC. Nutrition and epigenetics: an interplay of dietary methyl donors, one-carbon metabolism and DNA methylation. *J Nutr Biochem*. 2012;23:853–9.
113. Heijmans BT, Tobi EW, Stein AD, Putter H, Blauw GJ, Susser ES, et al. Persistent epigenetic differences associated with prenatal exposure to famine in humans. *Proc Natl Acad Sci U S A*. 2008;105:17046–9.
114. Peter CJ, Fischer LK, Kundakovic M, Garg P, Jakovcevski M, Dincer A, et al. DNA methylation signatures of early childhood malnutrition associated with impairments in attention and cognition. *Biol Psychiatry*. 2016;80:765–74.
115. Thaler R, Karlic H, Rust P, Haslberger AG. Epigenetic regulation of human buccal mucosa mitochondrial superoxide dismutase gene expression by diet. *Br J Nutr*. 2009;101:743–9.
116. Gadgil MS, Joshi KS, Naik SS, Pandit AN, Otiw SR, Patwardhan BK. Association of homocysteine with global DNA methylation in vegetarian Indian pregnant women and neonatal birth anthropometrics. *J Matern Fetal Neonatal Med*. 2014;27:1749–53.
117. Goodrich JM, Basu N, Franzblau A, Dolinoy DC. Mercury biomarkers and DNA methylation among Michigan dental professionals. *Environ Mol Mutagen*. 2013;54:195–203.
118. Chen W, Yang C, Yang L, Qi C, Tian S, Han Y, et al. Association of roasting meat intake with the risk of esophageal squamous cell carcinoma of Kazakh Chinese via affecting promoter methylation of p16 gene. *Asia Pac J Clin Nutr*. 2014;23:488–97.
119. Zhang FF, Santella RM, Wolff M, Kappil MA, Markowitz SB, Morabia A. White blood cell global methylation and IL-6 promoter methylation in association with diet and lifestyle risk factors in a cancer-free population. *Epigenetics*. 2012;7:606–14.
120. Voisin S, Eynon N, Yan X, Bishop DJ. Exercise training and DNA methylation in humans. *Acta Physiol (Oxf)*. 2015;213:39–59.
121. Ntanasis-Stathopoulos J, Tzanninis J-G, Philippou A, Koutsilieris M. Epigenetic regulation on gene expression induced by physical exercise. *J Musculoskelet Neuronal Interact*. 2013;13:133–46.
122. Wang B, Gao W, Lv J, Yu C, Wang S, Pang Z, et al. Physical activity attenuates genetic effects on BMI: Results from a study of Chinese adult twins. *Obesity (Silver Spring)*. 2016;24:750–6.
123. Zhang FF, Cardanelli R, Carroll J, Zhang S, Fulda KG, Gonzalez K, Vishwanatha JK, Morabia A, Santella RM. Physical activity and global genomic DNA methylation in a cancer-free population. *Epigenetics*. 2011;6:293–9.
124. White AJ, Sandler DP, Bolick SC, Xu Z, Taylor JA, DeRoo LA. Recreational and household physical activity at different time points and DNA global methylation. *Eur J Cancer*. 2013;49:2199–206.
125. Luttrupp K, Nordfors L, Ekstrom TJ, Lind L. Physical activity is associated with decreased global DNA methylation in Swedish older individuals. *Scand J Clin Lab Invest*. 2013;73:184–5.
126. Zeng H, Irwin ML, Lu L, Risch H, Mayne S, Mu L, et al. Physical activity and breast cancer survival: an epigenetic link through reduced methylation of a tumor suppressor gene L3MBTL1. *Breast Cancer Res Treat*. 2012;133:127–35.

127. Ronn T, Volkov P, Davegardh C, Dayeh T, Hall E, Olsson AH, et al. A six months exercise intervention influences the genome-wide DNA methylation pattern in human adipose tissue. *PLoS Genet.* 2013;9, e1003572.
128. Brown WM. Exercise-associated DNA, methylation change in skeletal muscle and the importance of imprinted genes: a bioinformatics meta-analysis. *Br J Sports Med.* 2015;49:1567–78.
129. Bryan AD, Magnan RE, Hooper AE, Harlaar N, Hutchison KE. Physical activity and differential methylation of breast cancer genes assayed from saliva: a preliminary investigation. *Ann Behav Med.* 2013;45:89–98.
130. Morabia A, Zhang FF, Kappil MA, Flory J, Mirer FE, Santella RM, et al. Biologic and epigenetic impact of commuting to work by car or using public transportation: a case-control study. *Prev Med.* 2012;54:229–33.
131. Nakajima K, Takeoka M, Mori M, Hashimoto S, Sakurai A, Nose H, et al. Exercise effects on methylation of ASC gene. *Int J Sports Med.* 2010;31:671–5.
132. Walsh S, Liu F, Wollstein A, Kovatsi L, Ralf A, Kosiniak-Kamysz A, Branicki W, Kayser M. The HlrisPlex system for simultaneous prediction of hair and eye colour from DNA. *Forensic Sci Int Genet.* 2013;7:98–115.
133. Silventoinen K, Kaprio J, Lahelma E, Koskenvuo M. Relative effect of genetic and environmental factors on body height: differences across birth cohorts among Finnish men and women. *Am J Public Health.* 2000;90:627–30.
134. Macgregor S, Cornes BK, Martin NG, Visscher PM. Bias, precision and heritability of self-reported and clinically measured height in Australian twins. *Hum Genet.* 2006;120:571–80.
135. Wood AR, Esko T, Yang J, Vedantam S, Pers TH, Gustafsson S, et al. Defining the role of common variation in the genomic and biological architecture of adult human height. *Nat Genet.* 2014;46:1173–86.
136. Marouli E, Graff M, Medina-Gomez C, Lo KS, Wood AR, Kjaer TR, et al. Rare and low-frequency coding variants alter human adult height. *Nature.* 2017;542:186–90.
137. Locke AE, Kahali B, Berndt SI, Justice AE, Pers TH, Day FR, et al. Genetic studies of body mass index yield new insights for obesity biology. *Nature.* 2015;518:197–206.
138. Simeone P, Alberti S. Epigenetic heredity of human height. *Physiol Rep.* 2014;2, e12047.
139. Dick KJ, Nelson CP, Tsaprouni L, Sandling JK, Aissi D, Wahl S, et al. DNA methylation and body-mass index: a genome-wide analysis. *Lancet.* 2014;383:1990–8.
140. Hu Y, Morota G, Rosa GJM, Gianola D. Prediction of plant height in *Arabidopsis thaliana* using DNA methylation data. *Genetics.* 2015;201:779–93.
141. Alvarado S, Rajakumar R, Abouheif E, Szyf M. Epigenetic variation in the Egfr gene generates quantitative variation in a complex trait in ants. *Nat Commun.* 2015;6:6513.
142. Cao J, Wei C, Liu D, Wang H, Wu M, Xie Z, et al. DNA methylation landscape of body size variation in sheep. *Sci Rep.* 2015;5:13950.
143. Tan Q, Frost M, Heijmans BT, von Bornemann Hjelmberg J, Tobi EW, Christensen K, et al. Epigenetic signature of birth weight discordance in adult twins. *BMC Genomics.* 2014;15:1062.
144. Richmond RC, Sharp GC, Ward ME, Fraser A, Lyttleton O, McArdle WL, et al. DNA methylation and BMI: investigating identified methylation sites at HIF3A in a causal framework. *Diabetes.* 2016;65:1231–44.
145. Wahl S, Drong A, Lehne B, Loh M, Scott WR, Kunze S, et al. Epigenome-wide association study of body mass index, and the adverse outcomes of adiposity. *Nature.* 2017;541:81–6.
146. Aslibekyan S, Demerath EW, Mendelson M, Zhi D, Guan W, Liang L, et al. Epigenome-wide study identifies novel methylation loci associated with body mass index and waist circumference. *Obesity (Silver Spring).* 2015;23:1493–501.
147. Eurostat. Migration and migrant population statistics. [http://ec.europa.eu/eurostat/statistics-explained/index.php/Migration\\_and\\_migrant\\_population\\_statistics](http://ec.europa.eu/eurostat/statistics-explained/index.php/Migration_and_migrant_population_statistics). Accessed 15 Nov 2017.
148. Beard BL, Johnson CM. Strontium isotope composition of skeletal material can determine the birth place and geographic mobility of humans and animals. *J Forensic Sci.* 2000;45:1049–61.
149. Giuliani C, Sazzini M, Bacalini MG, Pirazzini C, Marasco E, Fontanesi E, et al. Epigenetic variability across human populations: a focus on DNA methylation profiles of the *KRTCAP3*, *MAD1L1* and *BRSK2* genes. *Genome Biol Evol.* 2016;8:2760–73.
150. Gronniger E, Weber B, Heil O, Peters N, Stab F, Wenck H, et al. Aging and chronic sun exposure cause distinct epigenetic changes in human skin. *PLoS Genet.* 2010;6, e1000971.
151. Virani S, Rentschler KM, Nishijo M, Ruangyuttikarn W, Swaddiwudhipong W, Basu N, et al. DNA methylation is differentially associated with environmental cadmium exposure based on sex and smoking status. *Chemosphere.* 2016;145:284–90.
152. Huen K, Calafat AM, Bradman A, Yousefi P, Eskenazi B, Holland N. Maternal phthalate exposure during pregnancy is associated with DNA methylation of LINE-1 and Alu repetitive elements in Mexican-American children. *Environ Res.* 2016;148:55–62.
153. Ruiz-Hernandez A, Kuo CC, Rentero-Garrido P, Tang WY, Redon J, Ordovas JM, et al. Environmental chemicals and DNA methylation in adults: a systematic review of the epidemiologic evidence. *Clin Epigenetics.* 2015;7:55.
154. Salas LA, Bustamante M, Gonzalez JR, Gracia-Lavedan E, Moreno V, Kogevinas M, et al. DNA methylation levels and long-term trihalomethane exposure in drinking water: an epigenome-wide association study. *Epigenetics.* 2015;10:650–61.
155. Byun HM, Panni T, Motta V, Hou L, Nordio F, Apostoli P, et al. Effects of airborne pollutants on mitochondrial DNA methylation. Part Fibre Toxicol. 2013;10:18.
156. Mawlood SK, Dennany L, Watson N, Dempster J, Pickard BS. Quantification of global mitochondrial DNA methylation levels and inverse correlation with age at two CpG sites. *Aging.* 2016;8:1–6.
157. Netwacheck PW, Hung YY, Park MJ, Brindis CD, Irwin Jr CE. Disparities in adolescent health and health care: does socioeconomic status matter? *Health Serv Res.* 2003;38:1235–52.
158. Molnar BE, Cerda M, Roberts AL, Buka SL. Effects of neighborhood resources on aggressive and delinquent behaviors among urban youths. *Am J Public Health.* 2008;98:1086–93.
159. Uddin M, Galea S, Chang SC, Koenen KC, Goldmann E, Wildman DE, et al. Epigenetic signatures may explain the relationship between socioeconomic position and risk of mental illness: preliminary findings from an urban community-based sample. *Biodemography Soc Biol.* 2013;9:68–84.
160. Majnik AV, Lane RH. Epigenetics: where environment, society and genetics meet. *Epigenomics.* 2014;6:1–4.
161. Borghol N, Suderman M, McArdle W, Racine A, Hallett M, Pembrey M, et al. Associations with early-life socio-economic position in adult DNA methylation. *Int J Epidemiol.* 2012;41:62–74.
162. Lam LL, Emberly E, Fraser HB, Neumann SM, Chen E, Miller GE, et al. Factors underlying variable DNA methylation in a human community cohort. *Proc Natl Acad Sci U S A.* 2012;109 Suppl 2:17253–60.
163. Needham BL, Smith JA, Zhao W, Wang X, Mukherjee B, Kardina SL, et al. Life course socioeconomic status and DNA methylation in genes related to stress reactivity and inflammation: the multi-ethnic study of atherosclerosis. *Epigenetics.* 2015;10:958–69.
164. Stringhini S, Polidoro S, Sacerdote C, Kelly RS, van Veldhoven K, Agnoli C, et al. Life-course socioeconomic status and DNA methylation of genes regulating inflammation. *Int J Epidemiol.* 2015;44:1320–30.
165. Jones-Mason K, Allen IE, Bush N, Hamilton S. Epigenetic marks as the link between environment and development: examination of the associations between attachment, socioeconomic status, and methylation of the *SLC6A4* gene. *Brain Behav.* 2016;6, e00480.
166. Swartz JR, Hariri AR, Williamson DE. An epigenetic mechanism links socioeconomic status to changes in depression-related brain function in high-risk adolescents. *Mol Psychiatry.* 2017;22:209–14.
167. McGuinness D, McGlynn LM, Johnson PC, MacIntyre A, Batty GD, Burns H, et al. Socio-economic status is associated with epigenetic differences in the pSoBid cohort. *Int J Epidemiol.* 2012;41:151–60.
168. Tehranifar P, Wu HC, Fan X, Flom JD, Ferris JS, Cho YH, et al. Early life socioeconomic factors and genomic DNA methylation in mid-life. *Epigenetics.* 2013;8:23–7.
169. Huang JY, Gavin AR, Richardson TS, Rowhani-Rahbar A, Siscovick DS, Hochner H, et al. Accounting for life-course exposures in epigenetic biomarker association studies: early life socioeconomic position, candidate gene DNA methylation, and adult cardiometabolic risk. *Am J Epidemiol.* 2016;184:520–31.
170. Beach SR, Lei MK, Brody GH, Kim S, Barton AW, Dogan MV, et al. Parenting, socioeconomic status risk, and later young adult health: exploration of opposing indirect effects via DNA methylation. *Child Dev.* 2016;87:111–21.
171. Toom V, Wienroth M, M'Charek A, Prainsack B, Williams R, Duster T, et al. Approaching ethical, legal and social issues of emerging forensic DNA phenotyping (FDP) technologies comprehensively: Reply to "Forensic DNA phenotyping: Predicting human appearance from crime scene material for investigative purposes" by Manfred Kayser. *Forensic Sci Int Genet.* 2016;22:e1–4.

172. M'Charek A, Toom V, Prainsack B. Bracketing off population does not advance ethical reflection on EVCs: a reply to Kayser and Schneider. *Forensic Sci Int Genet.* 2012;6:e16–7. author reply e18–9.
173. Kayser M, Schneider PM. DNA-based prediction of human externally visible characteristics in forensics: motivations, scientific challenges, and ethical considerations. *Forensic Sci Int Genet.* 2009;3:154–61.
174. MacLean CE. Creating a wanted poster from a drop of blood: using DNA phenotyping to generate an artist's rendering of an offender based only on DNA shed at the crime scene. *Hamline Law Rev.* 2013;36(3):357–86.
175. Koops B-J, Schellekens HM. Forensic DNA phenotyping: regulatory issues. *Columbia Sci Technol Law Rev.* 2008;9(1):158–202.